

Art. TS70

FLOOR CLOSER



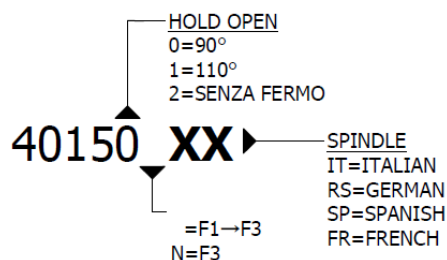
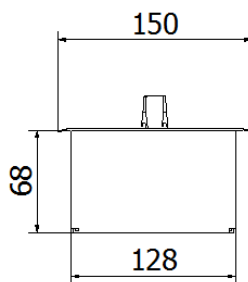
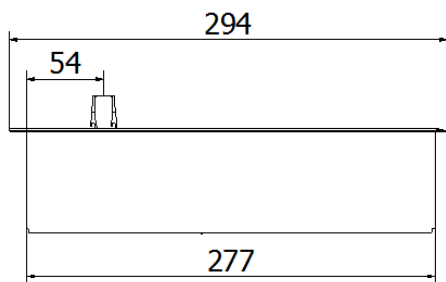
THERMOSTATIC OIL
 -18°C +50°C




TESTED TO ENSURE
 STABLE CLOSING TIMES
 TO THE DIFFERENT
 TEMPERATURE



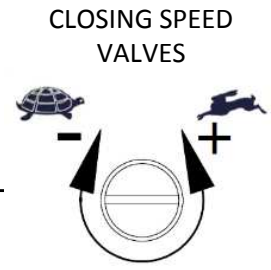
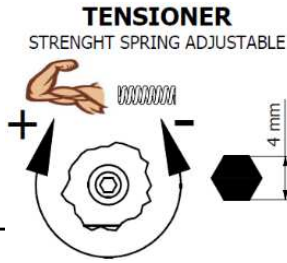
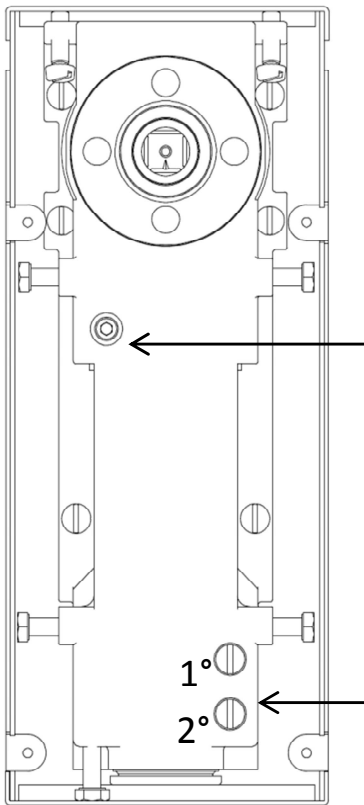
PATENTED AND TESTED
 IN ACCORDING TO THE EUROPEAN STANDARD
 UNI-EN 1154:2003



SERIES	ARTICLES	FORCE	HOLD OPEN	WEIGHT [KG]	WIDTH UP TO [MM]
TS70	40150	F1→F3	90°	180	700-1000
	40151	F1→F3	110°	180	700-1000
	40152	F1→F3	NO STOP	180	700-1000
	40150N	F3	90°	150	800-900
	40151N	F3	110°	150	800-900
	40152N	F3	NO STOP	150	800-900
	ARTICLE	DESCRIPTION		FINISH	CODE
		COVER		STAINLESS STEEL	INOX
				POLISHED BRASS	OT.LUX

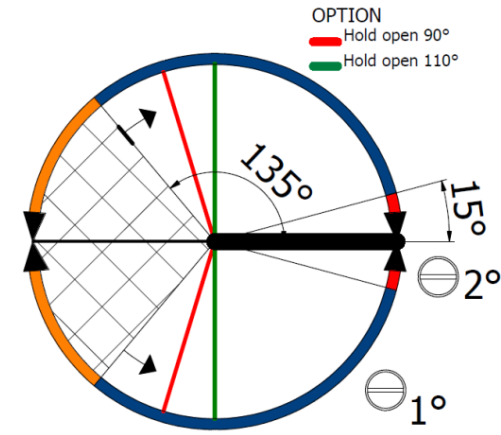
*THE STANDARD PACKAGE INCLUDES BOX CASE AND STAINLESS STEEL COVER AISI 304

TECHNICAL DETAILS



CLOSING ACTION

MAX DOOR OPENING 180°
 AUTOMATICALLY HYDRAULIC CLOSING FROM 135° OF OPENING

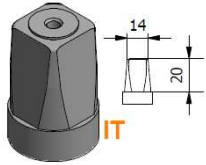


THERMOSTATIC OIL
 -18°C +50°C

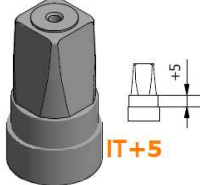
TESTED TO ENSURE
 STABLE CLOSING TIMES
 TO THE DIFFERENT TEMPERATURE

FLOOR CLOSER FIXED SPINDLES

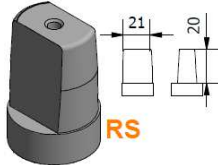
ITALIAN



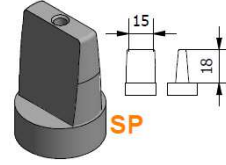
ITALIAN +5mm



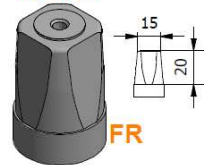
GERMAN



SPANISH



FRENCH



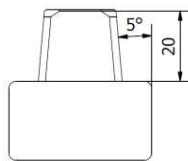
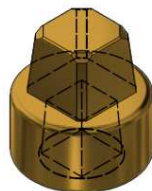
SPINDLE
 ACCESSORY
 Art.AC850



EXTENSIONER SPINDLE

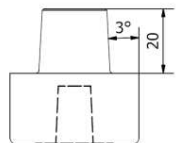
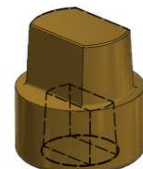
EXTENSIONER +29MM
 ITALIAN SPINDLE

ARTICLE
 40050



EXTENSIONER +29MM
 GERMAN SPINDLE

ARTICLE
 40050 RS



CERTIFICATION UNI EN 1154:2003



PATENTED AND TESTED
 IN ACCORDING TO THE
 EUROPEAN STANDARD
 UNI-EN 1154:2003

Art. NTS XXX

