

Art. NTS48C STANDARD

MINI



FLOOR CLOSER SERIES STANDARD MINI BOX CASE 90MM



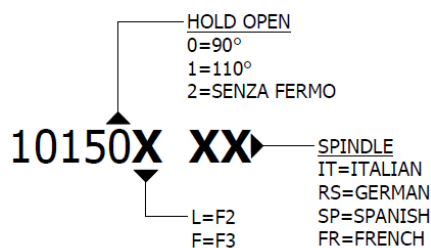
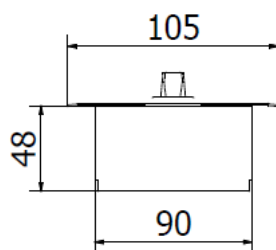
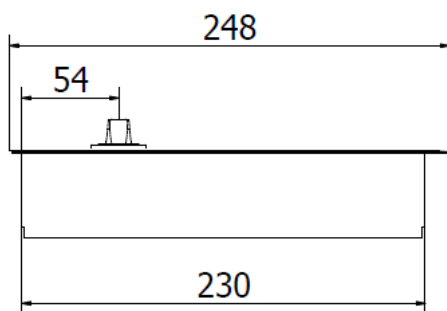
THERMOSTATIC OIL
-18°C +50°C



TESTED TO ENSURE
STABLE CLOSING TIMES
TO THE DIFFERENT
TEMPERATURE



PATENTED AND TESTED
IN ACCORDING TO THE EUROPEAN STANDARD
UNI-EN 1154:2003



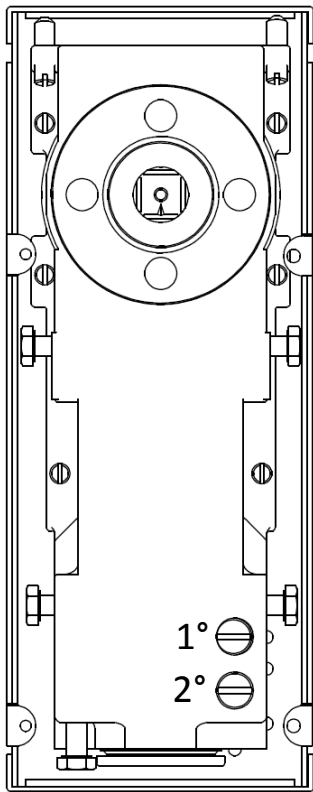
SERIES	ARTICLES	FORCE	HOLD OPEN	WEIGHT [KG]	WIDTH UP TO [MM]
NTS48C	10150L	F2	90°	80	500-800
	10151L	F2	110°	80	500-800
	10152L	F2	NO STOP	80	500-800
	10150F	F3	90°	120	700-1000
	10151F	F3	110°	120	700-1000
	10152F	F3	NO STOP	120	700-1000
	ARTICLE	DESCRIPTION	FINISH	CODE	
	COVER	STAINLESS STEEL	INOX		
		POLISHED BRASS	OT.LUX		

*THE STANDARD PACKAGE INCLUDES BOX CASE AND STAINLESS STEEL COVER AISI 304

PRODUCT DESIGNED AND MANUFACTURED IN ITALY

A. Vavassori

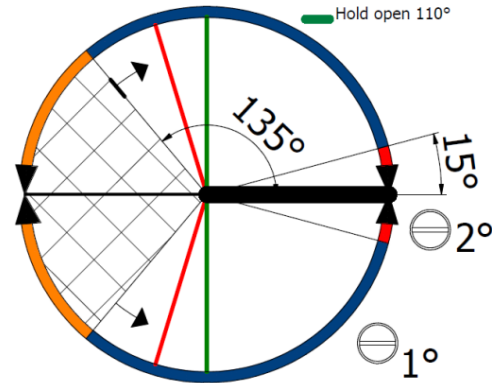
TECHNICAL DETAILS



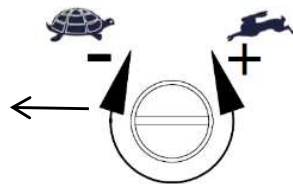
CLOSING ACTION

MAX DOOR OPENING 180°
 AUTOMATICALLY HYDRAULIC CLOSING FROM 135° OF OPENING

OPTION
 Hold open 90°
 Hold open 110°



CLOSING SPEED VALVES



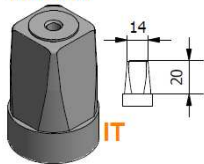
THERMOSTATIC OIL
 -18°C +50°C



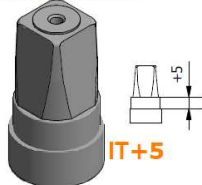
TESTED TO ENSURE
 STABLE CLOSING TIMES
 TO THE DIFFERENT TEMPERATURE

FLOOR CLOSER FIXED SPINDLES

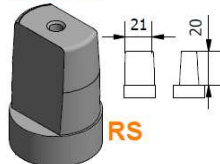
ITALIAN



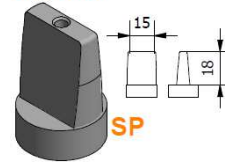
ITALIAN +5mm



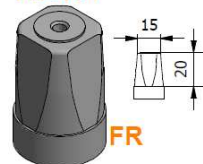
GERMAN



SPANISH



FRENCH



SPINDLE
 ACCESSORY
 Art.AC850

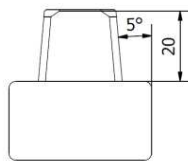
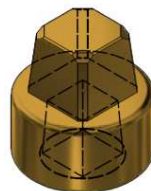


EXTENSIONER SPINDLE

EXTENSIONER +29MM
 ITALIAN SPINDLE

ARTICLE

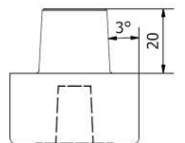
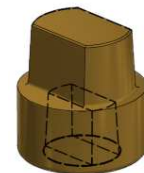
40050



EXTENSIONER +29MM
 GERMAN SPINDLE

ARTICLE

40050 RS



CERTIFICATION UNI EN 1154:2003



PATENTED AND TESTED
 IN ACCORDING TO THE
 EUROPEAN STANDARD
 UNI-EN 1154:2003

Art. NTS XXX

