

Art. NTS48C

MINI
LARGE



FLOOR CLOSER SERIES SPECIAL LARGE BOX CASE 95MM



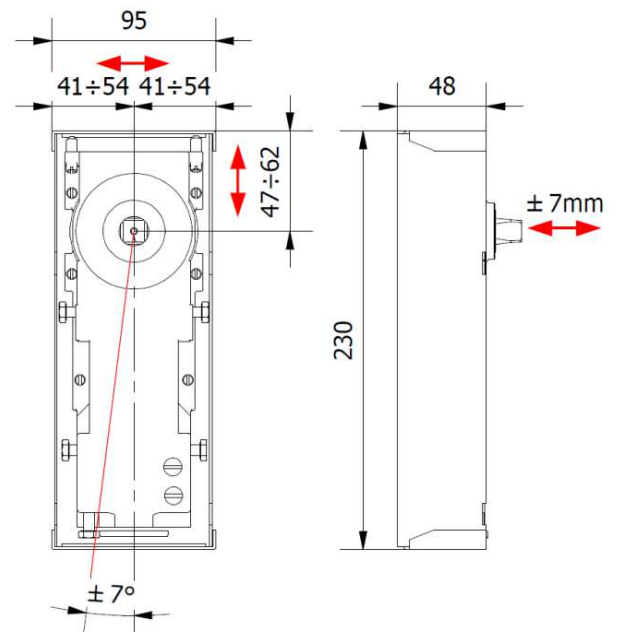
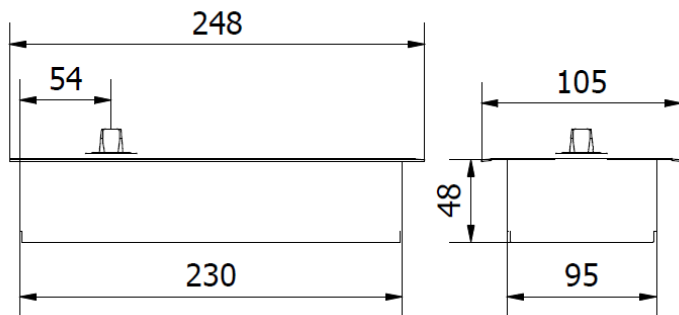
THERMOSTATIC OIL
-18°C +50°C



TESTED TO ENSURE
STABLE CLOSING TIMES
TO THE DIFFERENT
TEMPERATURE



PATENTED AND TESTED
IN ACCORD TO THE EUROPEAN STANDARD
UNI-EN 1154:2003



10550X XX

HOLD OPEN
0=90°
1=110°
2=SENZA FERMO

SPINDLE
IT=ITALIAN
RS=GERMAN
SP=SPANISH
FR=FRENCH

L=F2
F=F3

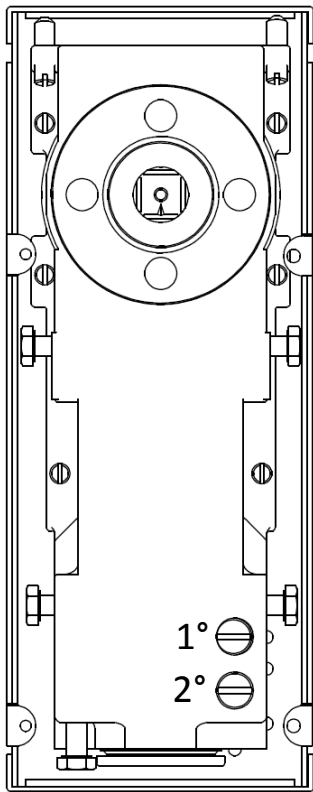
SERIES	ARTICLES	FORCE	HOLD OPEN	WEIGHT [KG]	WIDTH UP TO [MM]
NTS48C	10550L	F2	90°	80	500-800
	10551L	F2	110°	80	500-800
	10552L	F2	NO STOP	80	500-800
	10550F	F3	90°	120	700-1000
	10551F	F3	110°	120	700-1000
	10552F	F3	NO STOP	120	700-1000
	ARTICLE	DESCRIPTION		FINISH	CODE
		COVER		STAINLESS STEEL	INOX
				POLISHED BRASS	OT.LUX

*THE STANDARD PACKAGE INCLUDES BOX CASE AND STAINLESS STEEL COVER AISI 304

PRODUCT DESIGNED AND MANUFACTURED IN ITALY

A. Vavassori

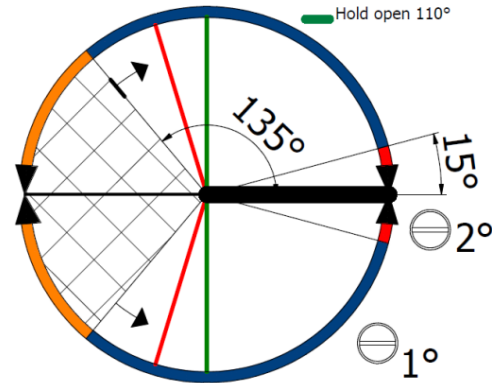
TECHNICAL DETAILS



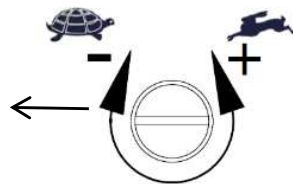
CLOSING ACTION

MAX DOOR OPENING 180°
 AUTOMATICALLY HYDRAULIC CLOSING FROM 135° OF OPENING

OPTION
 Hold open 90°
 Hold open 110°



CLOSING SPEED VALVES

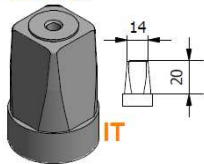


THERMOSTATIC OIL
 -18°C +50°C

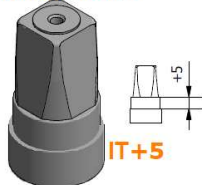
TESTED TO ENSURE
 STABLE CLOSING TIMES
 TO THE DIFFERENT TEMPERATURE

FLOOR CLOSER FIXED SPINDLES

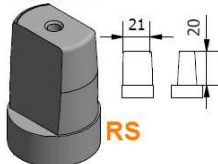
ITALIAN



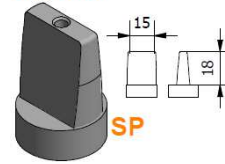
ITALIAN +5mm



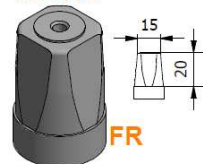
GERMAN



SPANISH



FRENCH



SPINDLE
 ACCESSORY
 Art.AC850

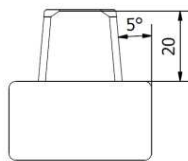
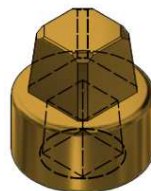


EXTENSIONER SPINDLE

EXTENSIONER +29MM
 ITALIAN SPINDLE

ARTICLE

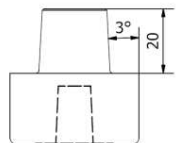
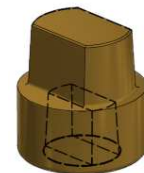
40050



EXTENSIONER +29MM
 GERMAN SPINDLE

ARTICLE

40050 RS



CERTIFICATION UNI EN 1154:2003

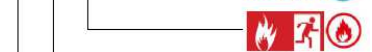


PATENTED AND TESTED
 IN ACCORDING TO THE
 EUROPEAN STANDARD
 UNI-EN 1154:2003

Art. NTS XXX

38X014 ← EN 1670

← EN 1154



← 1'000'000
 CYCLES TESTED