

Art. NTS48

FLOOR CLOSER



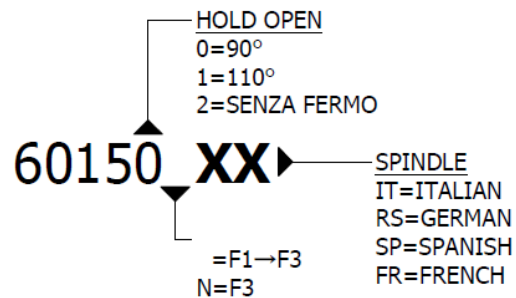
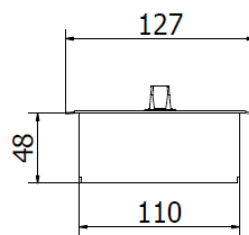
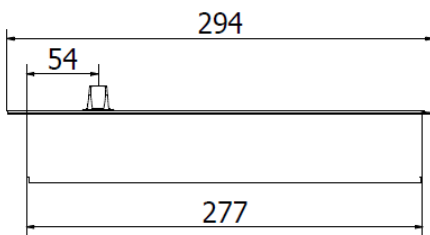
THERMOSTATIC OIL
 -18°C +50°C



TESTED TO ENSURE
 STABLE CLOSING TIMES
 TO THE DIFFERENT
 TEMPERATURE



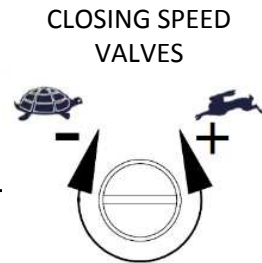
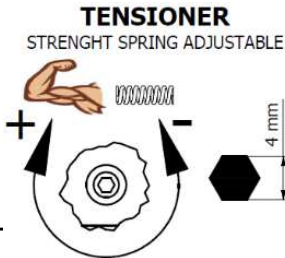
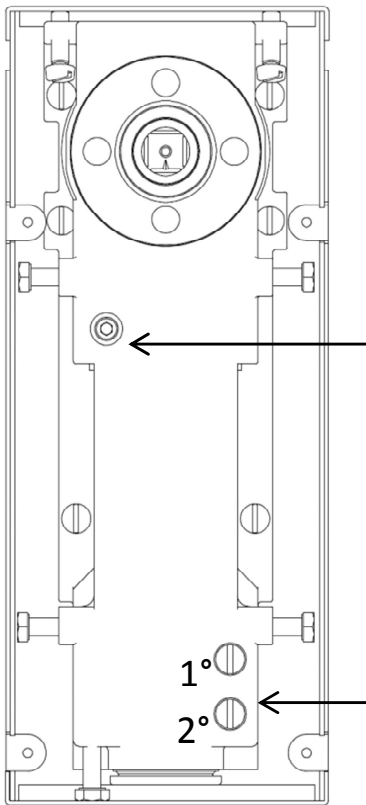
PATENTED AND TESTED
 IN ACCORDING TO THE EUROPEAN STANDARD
 UNI-EN 1154:2003



SERIES	ARTICLES	FORCE	HOLD OPEN	WEIGHT [KG]	WIDTH UP TO [MM]
NTS48	60150	F1→F3	90°	120	700-1000
	60151	F1→F3	110°	120	700-1000
	60152	F1→F3	NO STOP	120	700-1000
	60150N	F3	90°	100	800-900
	60151N	F3	110°	100	800-900
	60152N	F3	NO STOP	100	800-900
	ARTICLE	DESCRIPTION	FINISH	CODE	
	COVER	STAINLESS STEEL	INOX		
		POLISHED BRASS	OT.LUX		

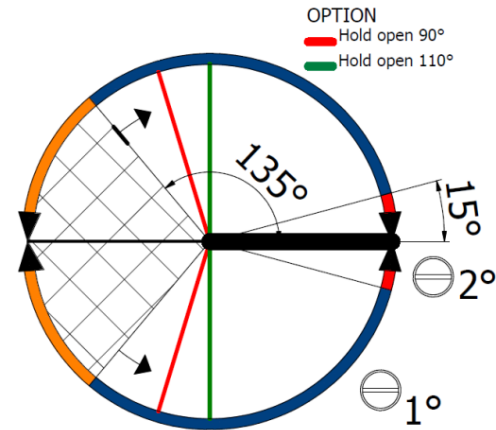
*THE STANDARD PACKAGE INCLUDES BOX CASE AND STAINLESS STEEL COVER AISI 304

TECHNICAL DETAILS



CLOSING ACTION

MAX DOOR OPENING 180°
 AUTOMATICALLY HYDRAULIC CLOSING FROM 135° OF OPENING

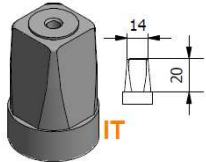


THERMOSTATIC OIL
 -18°C +50°C

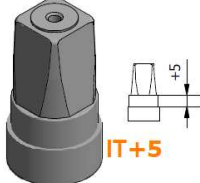
TESTED TO ENSURE
 STABLE CLOSING TIMES
 TO THE DIFFERENT TEMPERATURE

FLOOR CLOSER FIXED SPINDLES

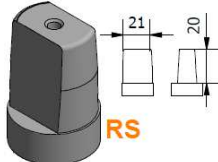
ITALIAN



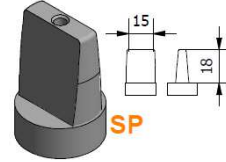
ITALIAN +5mm



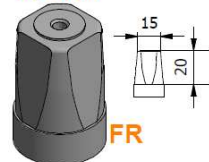
GERMAN



SPANISH



FRENCH



SPINDLE
 ACCESSORY
 Art.AC850

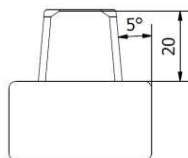
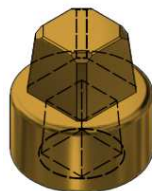


EXTENSIONER SPINDLE

EXTENSIONER +29MM
 ITALIAN SPINDLE

ARTICLE

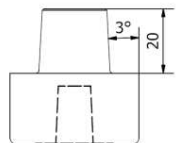
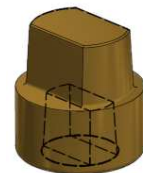
40050



EXTENSIONER +29MM
 GERMAN SPINDLE

ARTICLE

40050 RS



CERTIFICATION UNI EN 1154:2003



PATENTED AND TESTED
 IN ACCORDING TO THE
 EUROPEAN STANDARD
 UNI-EN 1154:2003

Art. NTS XXX

